



WORKING TOGETHER TO CREATE OUR REGION'S FUTURE

Driven Accountabilities

Key Benchmarks measure our progress; we will celebrate our success or change our course and review, revise and refocus as needed.

Janet Harrah, Director
Center for Economic Development and Business Research

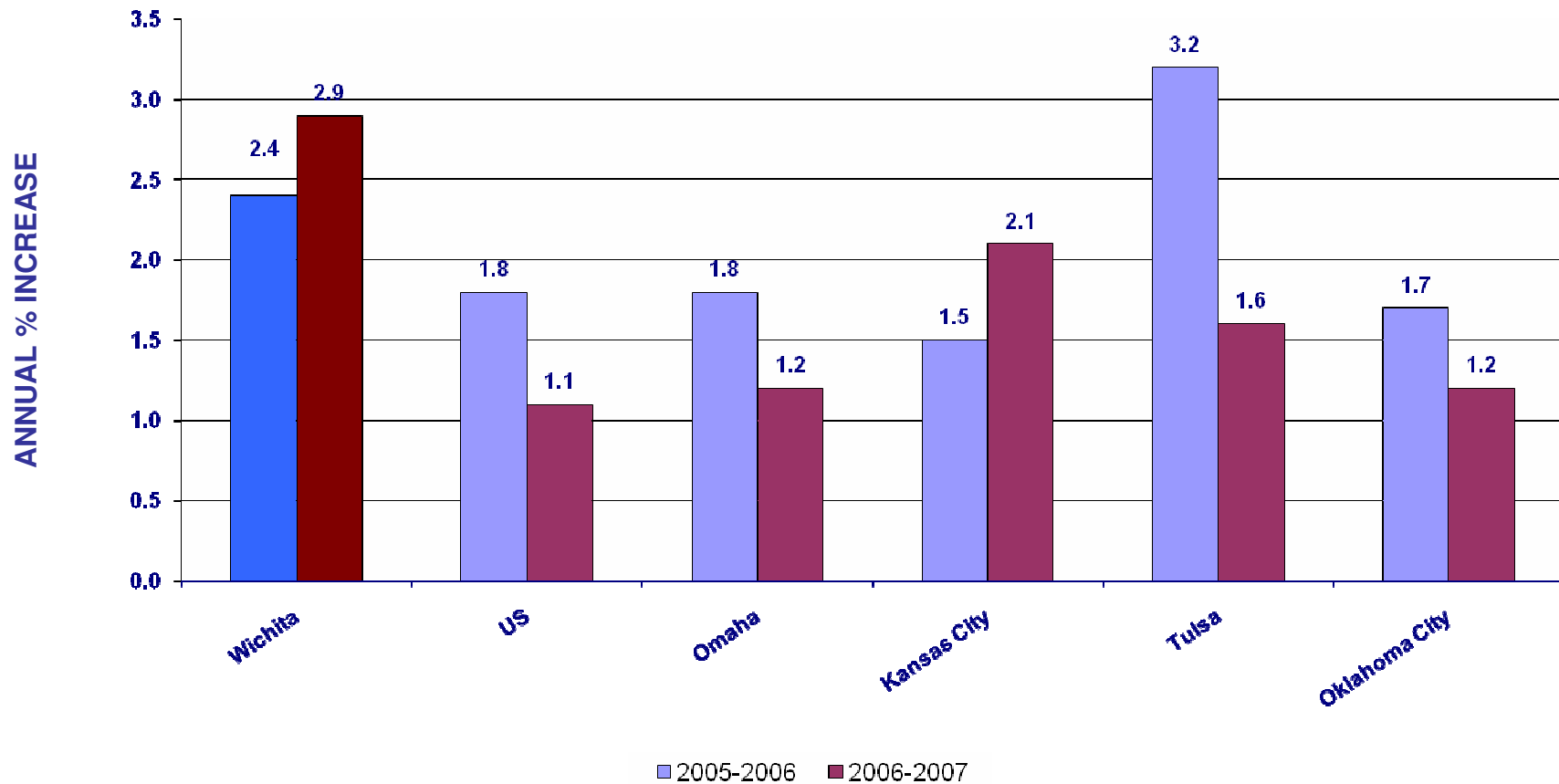


Job Growth

By 2008, exceed the highest of the annual percentage job growth rate of the U.S., Omaha, Tulsa, Kansas City and Oklahoma City.

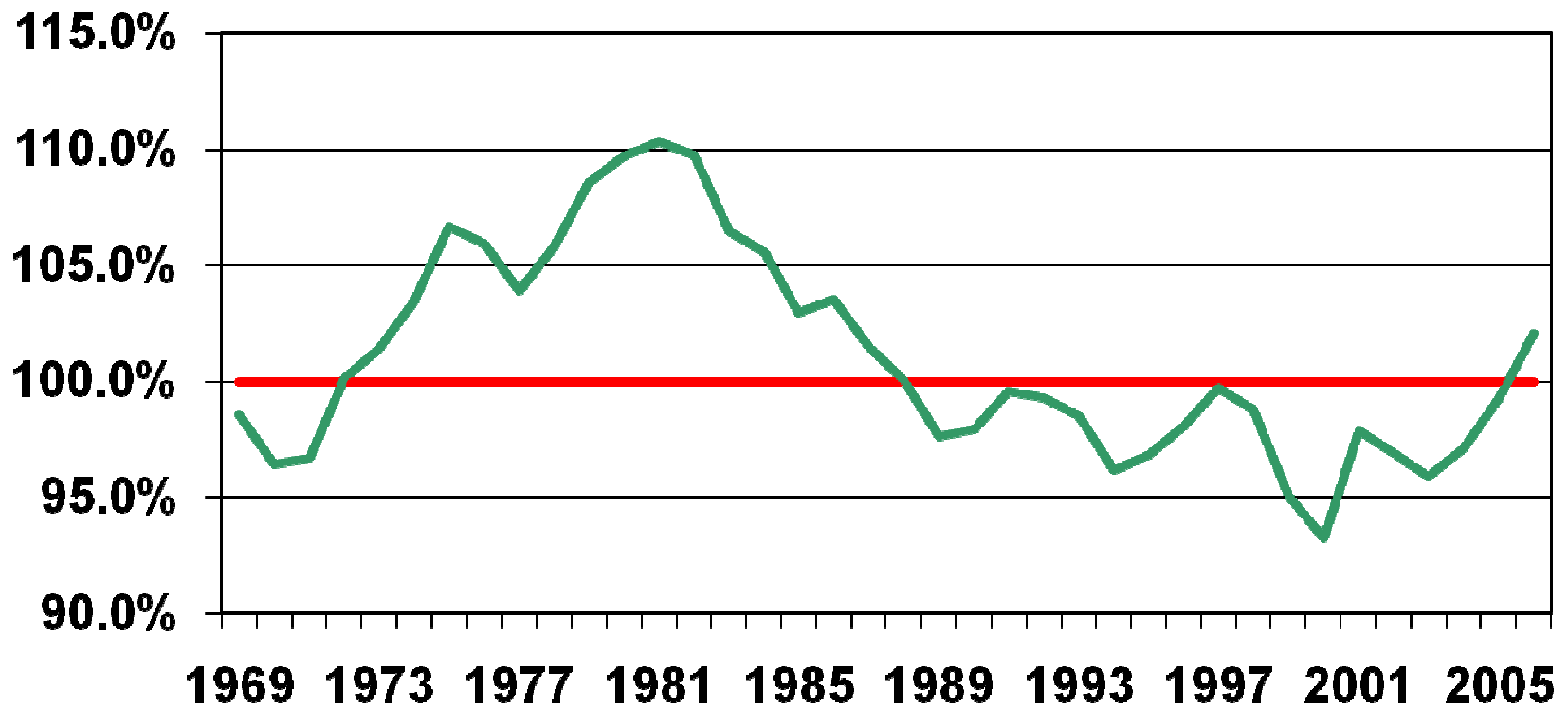
JOB GROWTH 2005-2006 and 2006-2007 (annual percentage change)

Source: Bureau of Labor Statistics



Per Capita Personal Income

Stop the 21-year decline of Wichita MSA per capita income as a percentage of U.S. per capita income before 2011



Source: Bureau of Economic Analysis

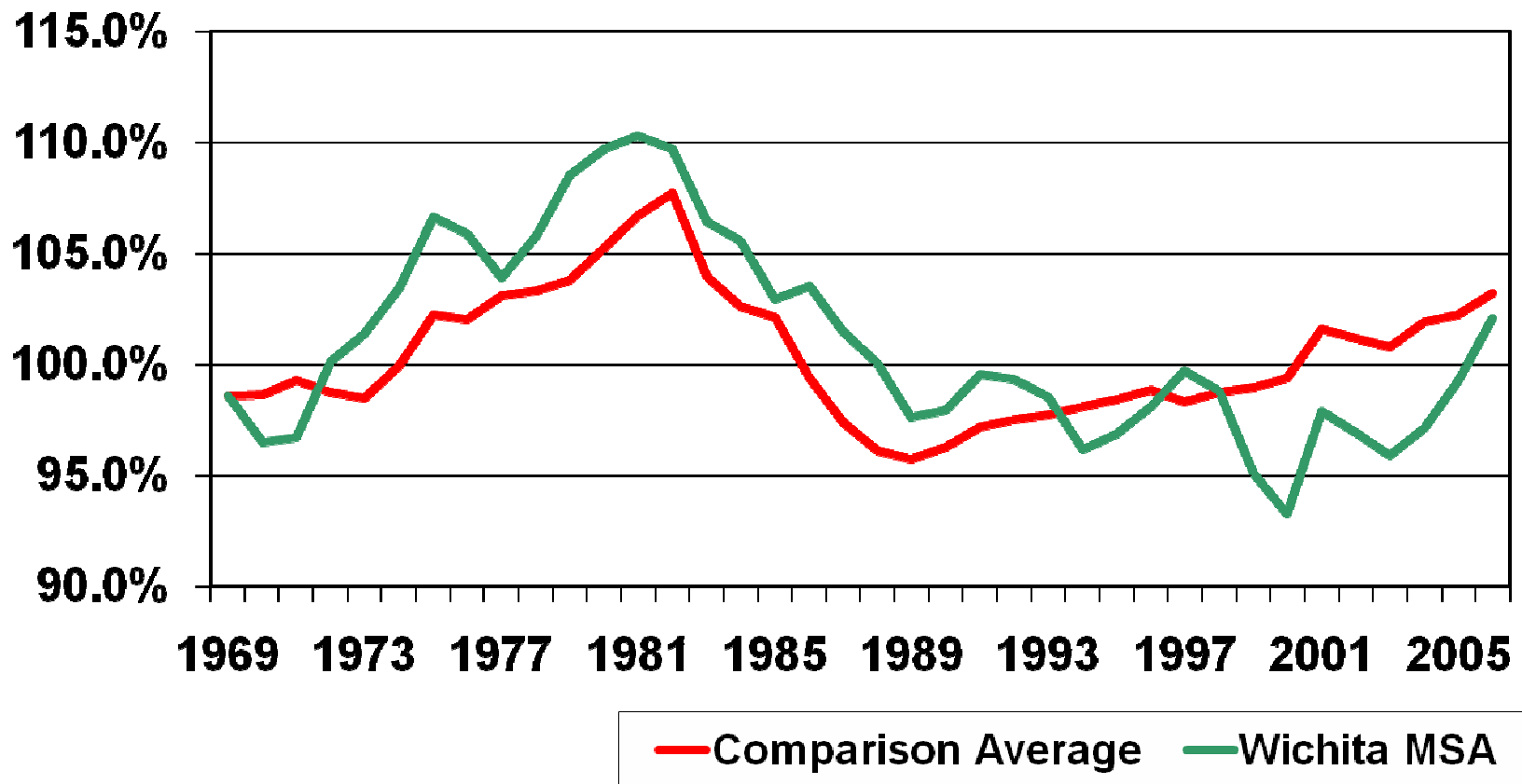
— United States — Wichita MSA

\$36,714

\$37,471

Per Capita Personal Income

By 2024 exceed the annual average per capita income of Omaha, Tulsa, Kansas City and Oklahoma City metropolitan areas



Source: Bureau of Economic Analysis



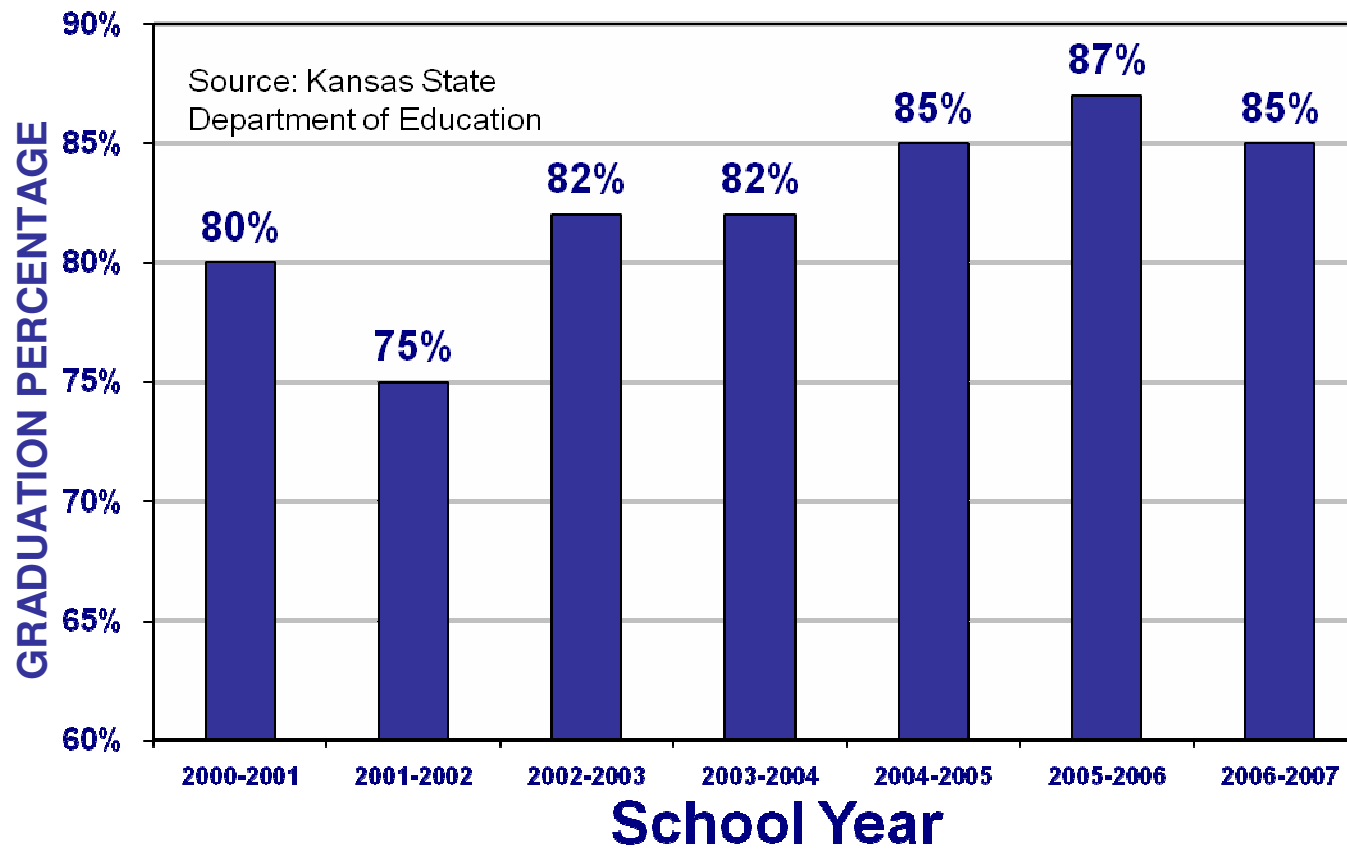
Education

- Skills Training & Life-long Education
Jabara Technical Training Campus becoming a reality
- Post-secondary Education
- Pre- Kindergarten through 12th grade



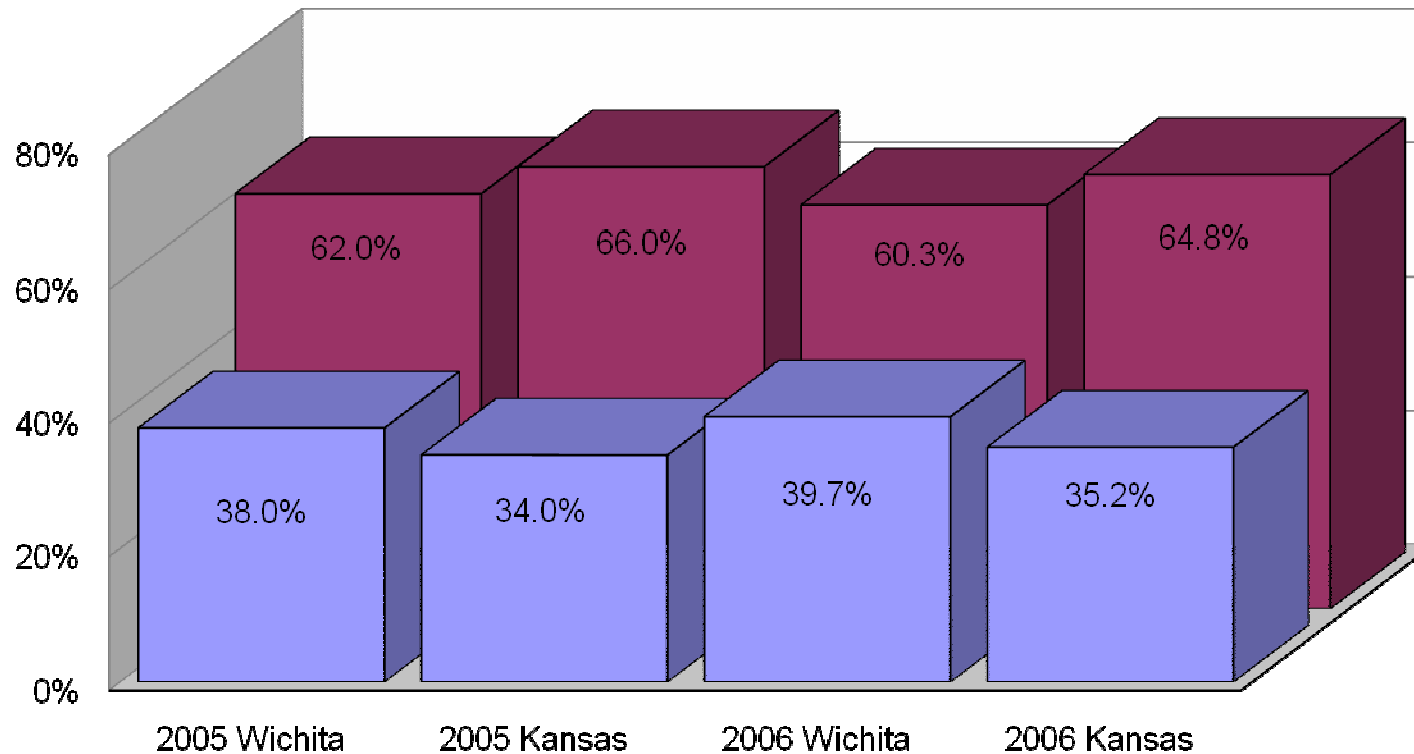
Education

MSA HIGH SCHOOL GRADUATION RATES (public high schools)



Family Stability - Births

The four counties in the Wichita MSA will be below the Kansas average by 2024 in percentage of live births born out of wedlock.



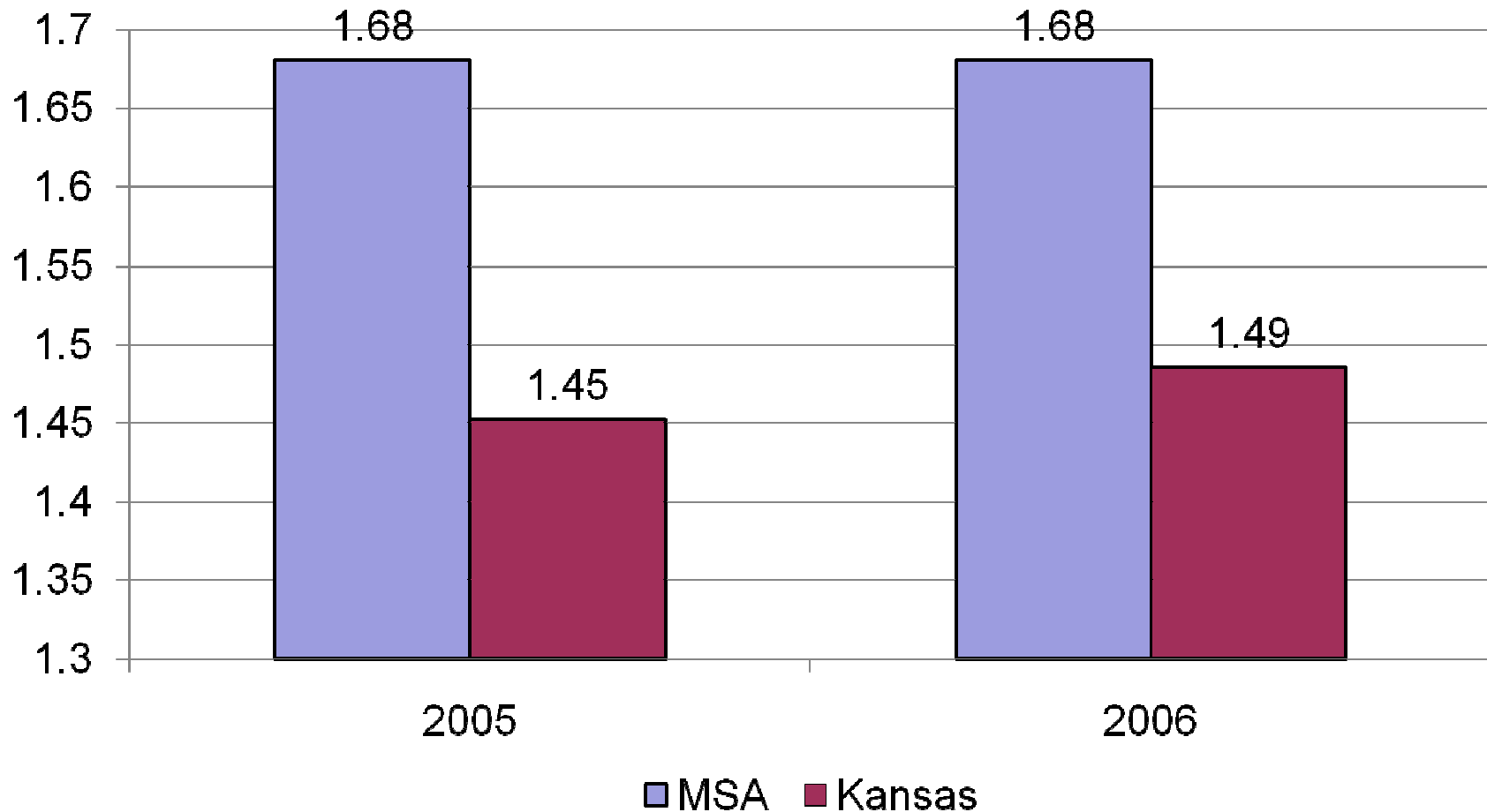
■ Out of Wedlock Births ■ Wedlock Births

Source: Kansas Vital Statistics Web

Family Stability - Marriage

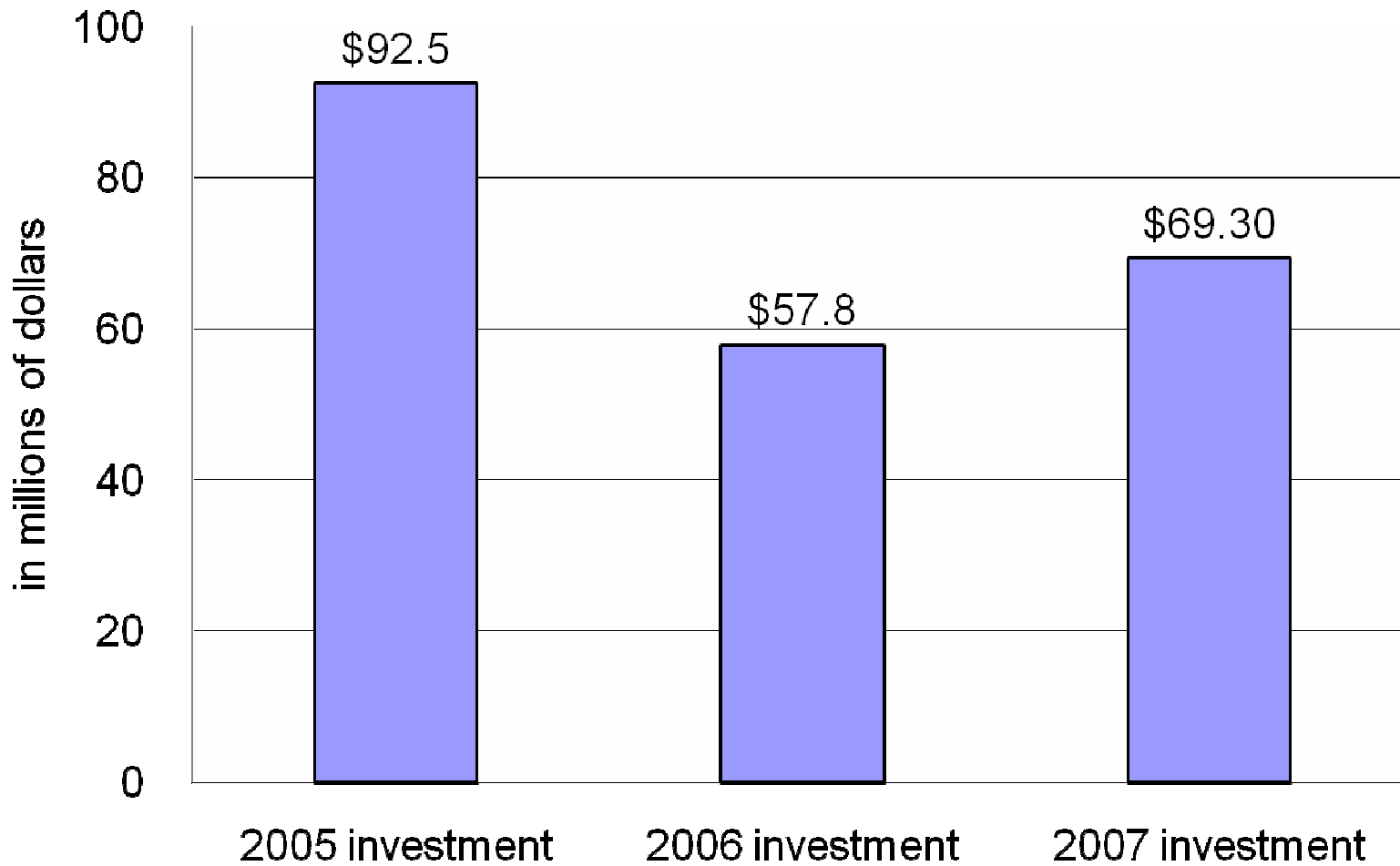
The four counties in the Wichita MSA will have a better ratio of marriages to marriage dissolutions (annulments & divorces) than Kansas by 2024.

In 2006, for every 1 marriage in the Wichita MSA there were 0.68 divorces.



Source: Kansas Vital Statistics Web Site

TOTAL FINANCIAL INVESTMENT for WICHITA DOWNTOWN DEVELOPMENT (private & public funds)



Source: City of Wichita, Sedgwick County, Wichita Downtown Development Corporation



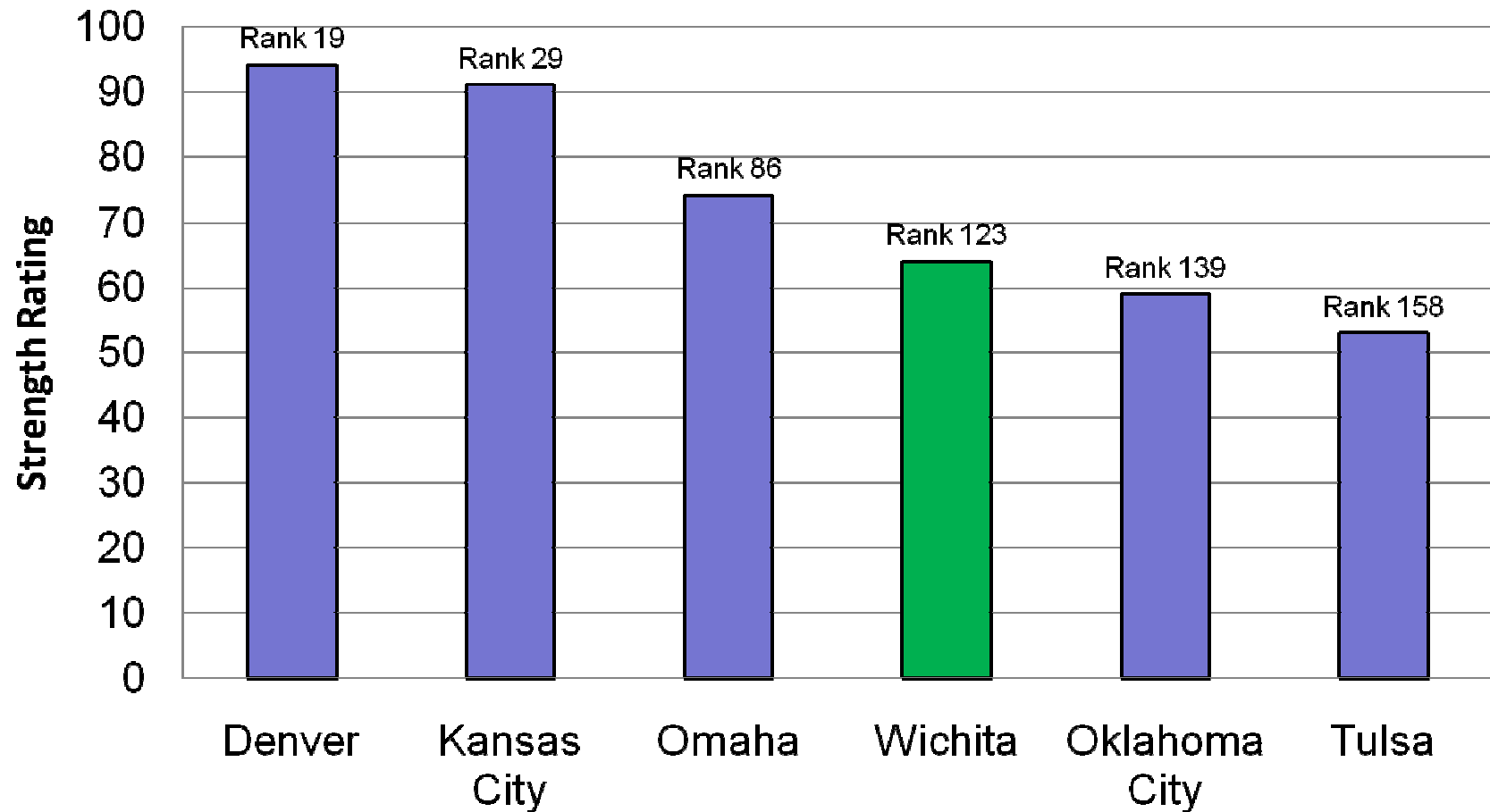
Arts Benchmark Recreation Benchmark

- **By 2014: Wichita MSA will place in the top one-fourth of cities ranked**



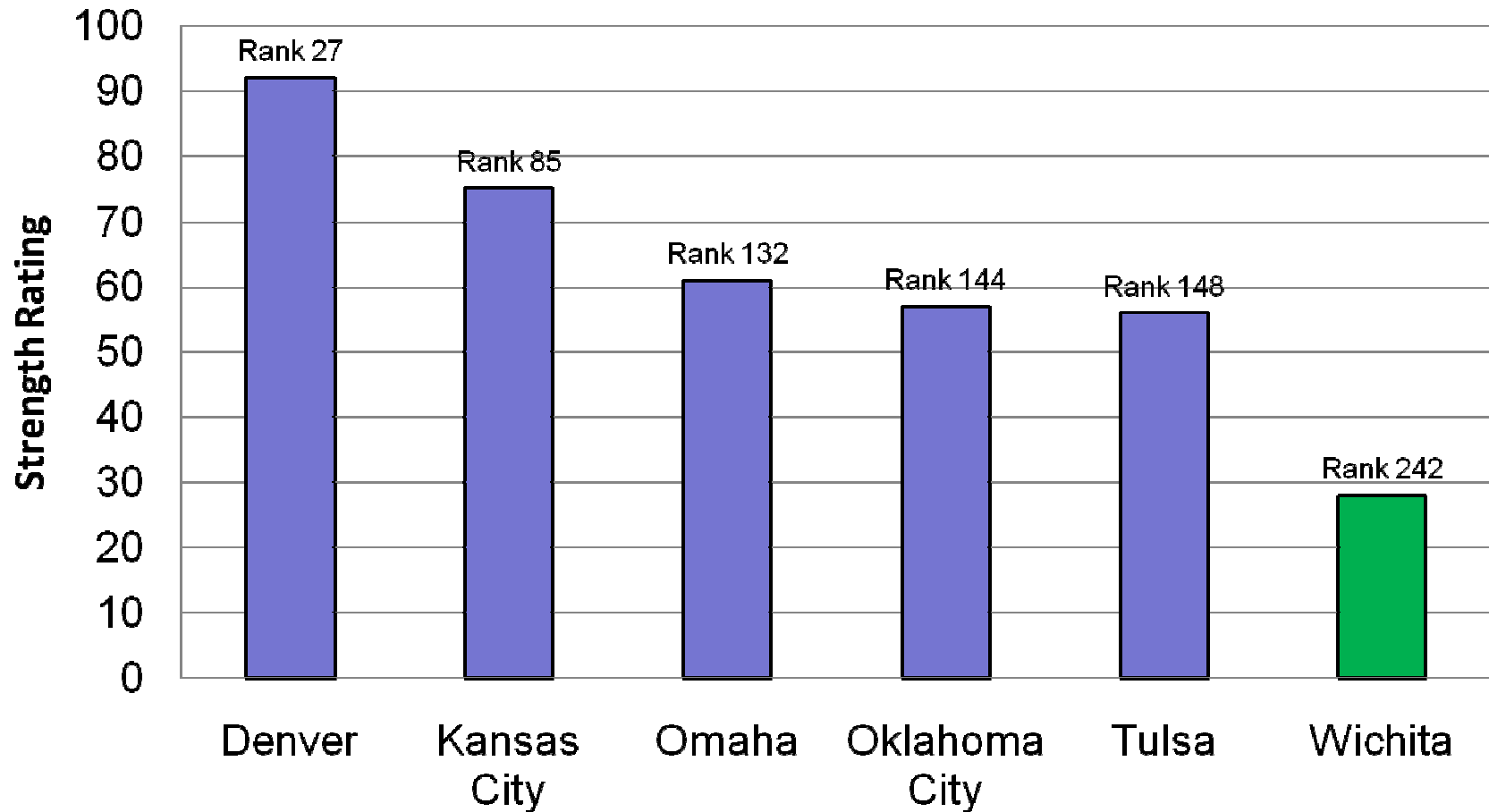
Arts

The Wichita MSA will be in the upper one-fourth of Cities Ranked & Rated 2007 Arts scores by 2014.



Recreation

The Wichita MSA will be in the upper one-fourth of Cities Ranked & Rated 2007 Recreation scores by 2014.



Source: Cities Ranked & Rated, 2nd Edition, 2007.



Racial Diversity, Opportunity & Harmony

In all of the six foundations and strategies of Visioneering Wichita, we will be committed to racial diversity, opportunity and harmony for everyone.

- **Attitude Survey**: Conduct a regular scientific attitude survey to measure changes in perceptions about racial diversity, opportunity and harmony. The survey will establish indices that measure diversity, opportunity and harmony in social interaction, jobs, education, healthcare and leadership (initial survey completed January 2006; expected annual increments of improvement in the indices will be established.)





Racial Diversity, Opportunity & Harmony

In all of the six foundations and strategies of Visioneering Wichita, we will be committed to racial diversity, opportunity and harmony for everyone.

- **Income Gap**: Be above the U.S. per capita income for each minority group by 2010 and by 2020 eliminate one-half of each minority per capita income gap.



Per Capita Income by Race & Ethnicity

For Sedgwick County and the United States

